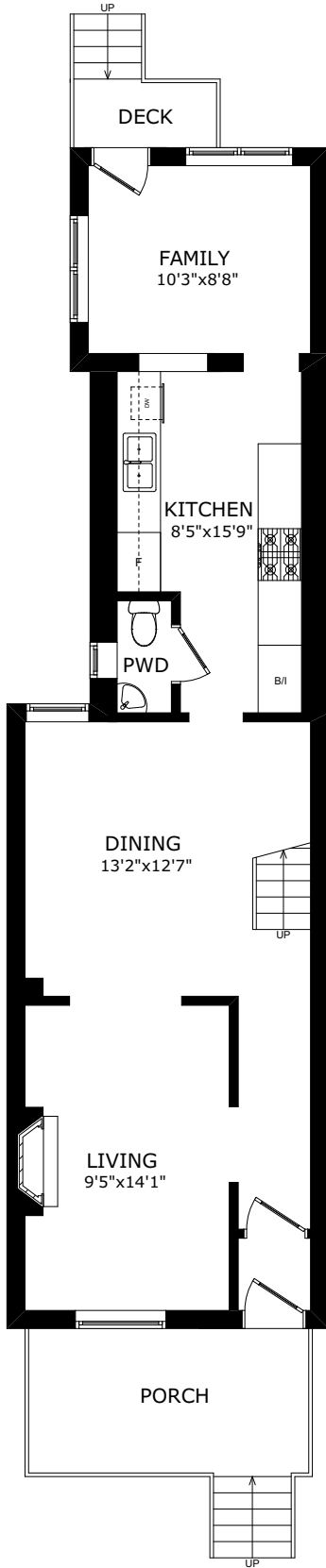
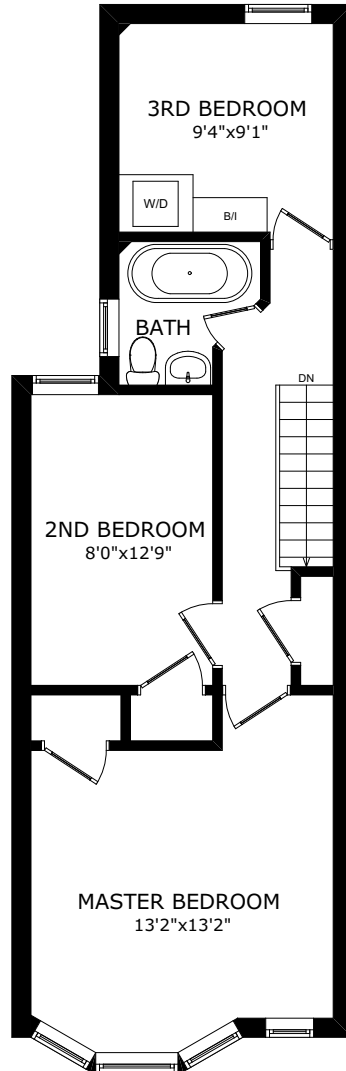


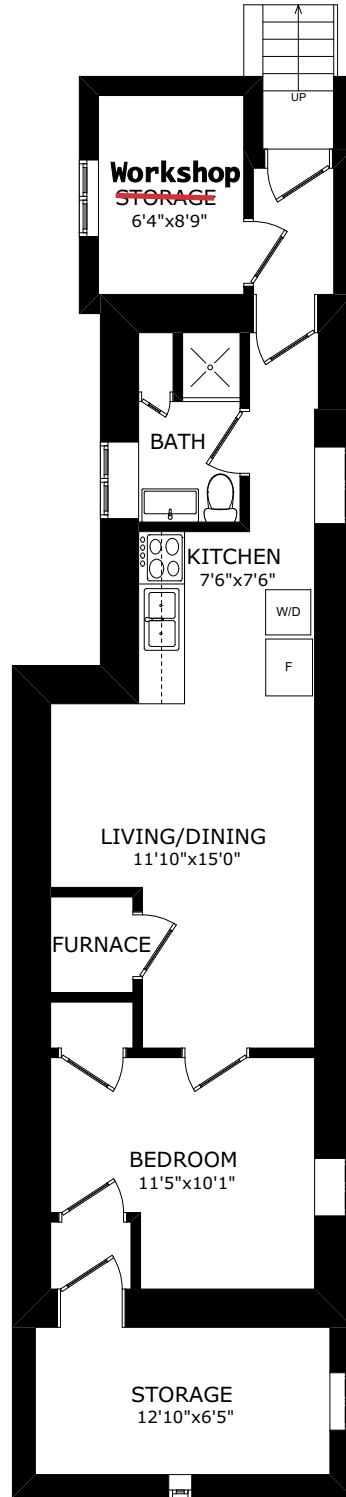
59 OLIVE AVENUE



MAIN FLOOR



SECOND FLOOR



BASEMENT



SHED

ROOM DATA SHEET

59 Olive Avenue

Data Provided by www.houssmax.ca @ 2020

	Imperial			Metric		
	Width	x	Depth	Width	x	Depth
Main Floor						
Living Room	9' 5"	x	14' 1"	2.87	x	4.29
Dining Room	13' 2"	x	12' 7"	4.01	x	3.84
Kitchen	8' 5"	x	15' 9"	2.57	x	4.80
Family	10' 3"	x	8' 8"	3.12	x	2.64
Second Floor						
Master Bedroom	13' 2"	x	13' 2"	4.01	x	4.01
2nd Bedroom	8' 0"	x	12' 9"	2.44	x	3.89
3rd Bedroom	9' 4"	x	9' 1"	2.84	x	2.77
Shed						
Office/Workshop	7' 7"	x	9' 4"	2.31	x	2.84
Basement						
Living/Dining	11' 10"	x	15' 0"	3.61	x	4.57
Kitchen	7' 6"	x	7' 6"	2.29	x	2.29
Bedroom	11' 5"	x	10' 1"	3.48	x	3.07
Storage	12' 10"	x	6' 5"	3.91	x	1.96
Storage Workshop	6' 4"	x	8' 9"	1.93	x	2.67
Area Calculation						
Main Floor	720 sq.ft.					
Second Floor	615 sq.ft.					
Shed	86 sq.ft.					
Basement	830 sq.ft.					
Total	2251 sq.ft.					