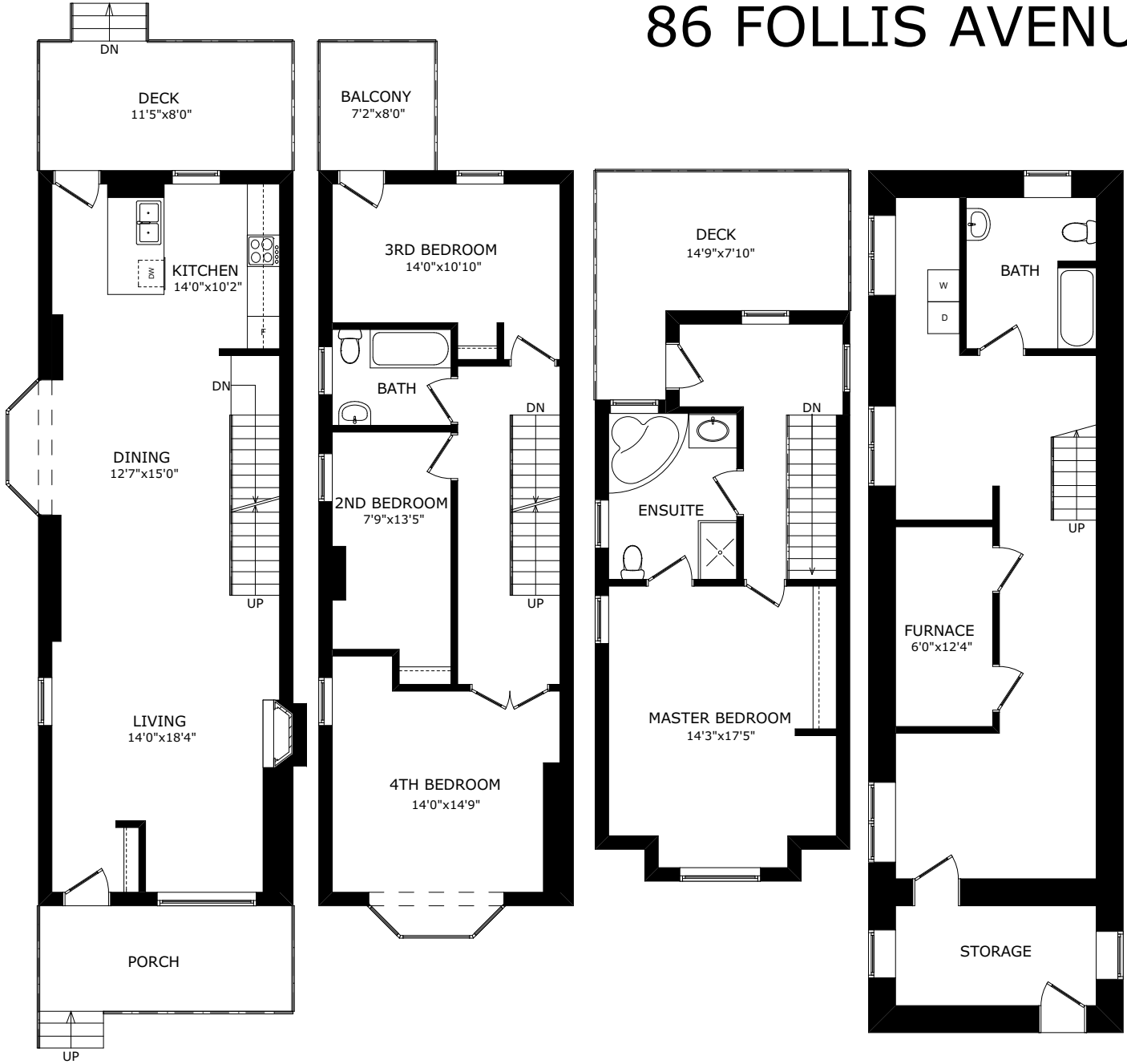


86 FOLLIS AVENUE



MAIN FLOOR

SECOND FLOOR

THIRD FLOOR

CLG: 7'3"
LOWER FLOOR

SIZE AND LAYOUT ARE APPROXIMATE,
BUYER TO VERIFY SIZES.
WWW.HOUSSMAX.CA

ROOM MEASUREMENT

86 Follis Avenue

Data Provided by www.houssmax.ca @2019

	Imperial			Metric		
Main Floor						
Living Room	14' 0"	x	18' 4"	4.27	x	5.59
Dining Room	12' 7"	x	15' 0"	3.84	x	4.57
Kitchen	14' 0"	x	10' 2"	4.27	x	3.10
Deck	11' 5"	x	8' 0"	3.48	x	2.44
Second Floor						
2nd Bedroom	7' 9"	x	13' 5"	2.36	x	4.09
3rd Bedroom	14' 0"	x	10' 10"	4.27	x	3.30
4th Bedroom	14' 0"	x	14' 9"	4.27	x	4.50
Balcony	7' 2"	x	8' 0"	2.18	x	2.44
Third Floor						
Master Bedroom	14' 3"	x	17' 5"	4.34	x	5.31
Deck	14' 9"	x	7' 10"	4.50	x	2.39
Lower Floor						
Furnace	6' 0"	x	12' 4"	1.83	x	3.76
Area Calculation						
Main Floor	714.2 sq.ft.					
Second Floor	714.2 sq.ft.					
Third Floor	518.2 sq.ft.					
Lower Floor	837.4 sq.ft.					
Total	2784.0 sq.ft.					