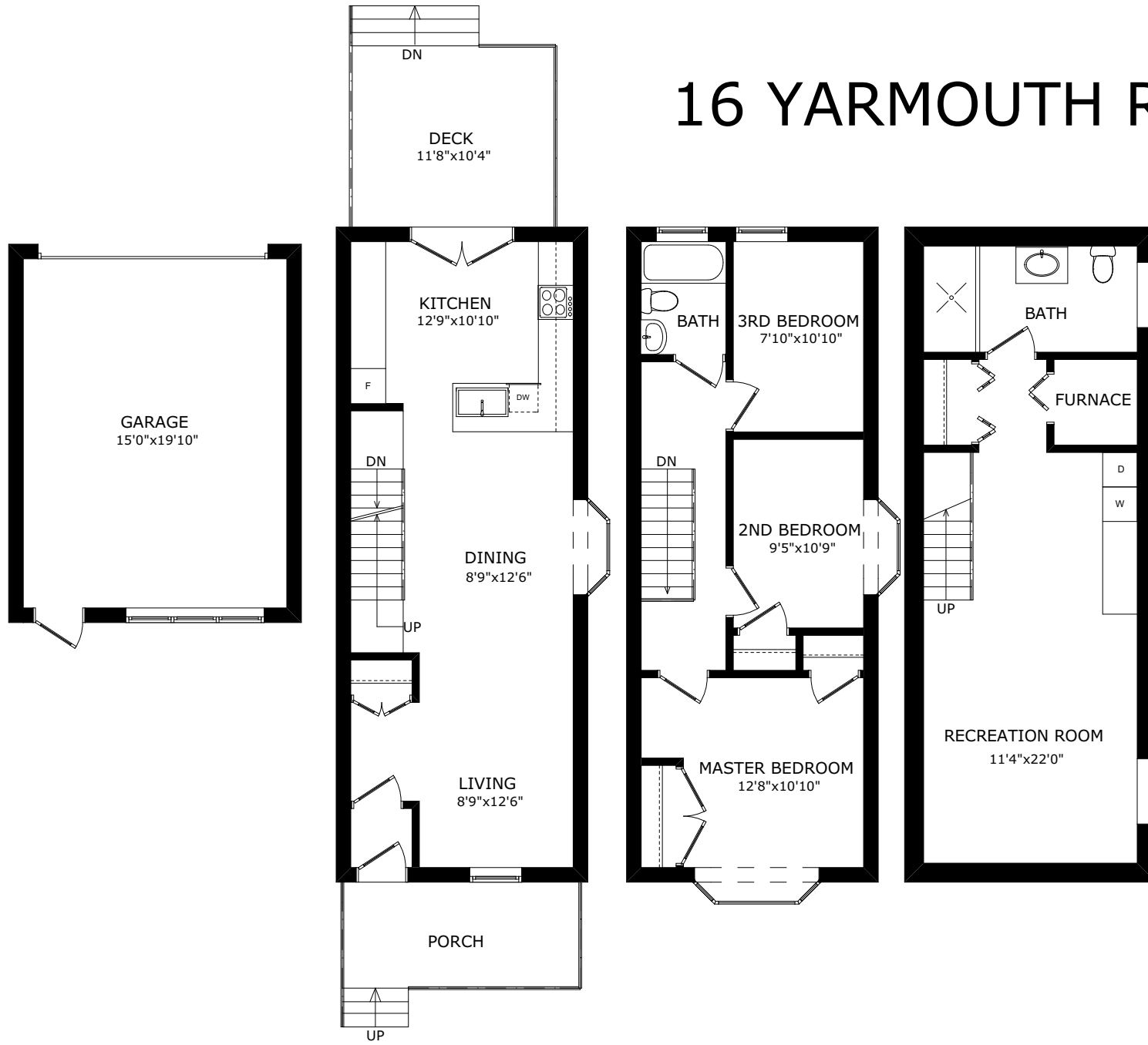


16 YARMOUTH ROAD



MAIN FLOOR

SECOND FLOOR

LOWER FLOOR

SIZE AND LAYOUT ARE APPROXIMATE,
BUYER TO VERIFY SIZES.
WWW.HOUSSMAX.CA

ROOM DATA SHEET

16 Yarmouth Road

Data Provided by www.houssmax.ca @2018

Main Floor	Imperial			Metric		
	Width	x	Depth	Width	x	Depth
Living Room	8' 9"	x	12' 6"	2.67	x	3.81
Dining Room	8' 9"	x	12' 6"	2.67	x	3.81
Kitchen	12' 9"	x	10' 10"	3.89	x	3.30
Deck	11' 8"	x	10' 4"	3.56	x	3.15
Garage	15' 0"	x	19' 10"	4.57	x	6.05

Second Floor	Width	x	Depth	Width	x	Depth
Master Bedroom	12' 8"	x	10' 10"	3.86	x	3.30
2nd Bedroom	9' 5"	x	10' 9"	2.87	x	3.28
3rd Bedroom	7' 10"	x	10' 10"	2.39	x	3.30

Lower Floor	Width	x	Depth	Width	x	Depth
Recreation Room	11' 4"	x	22' 0"	3.45	x	6.71

Area Calculation				
Main Floor	535.7	sq.ft.	Garage	299.0 sq.ft.
Second Floor	535.7	sq.ft.		
Lower Floor	535.7	sq.ft.		
Total	1607.1	sq.ft.		