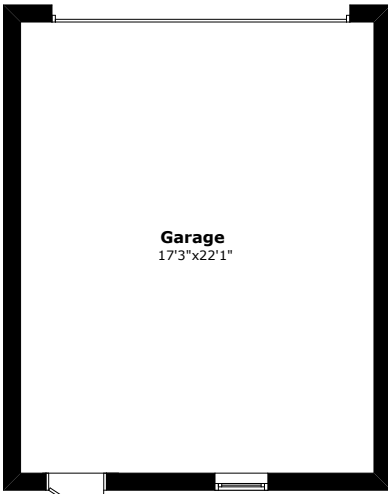
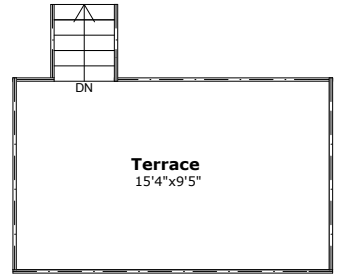


# 197 BEATRICE STREET

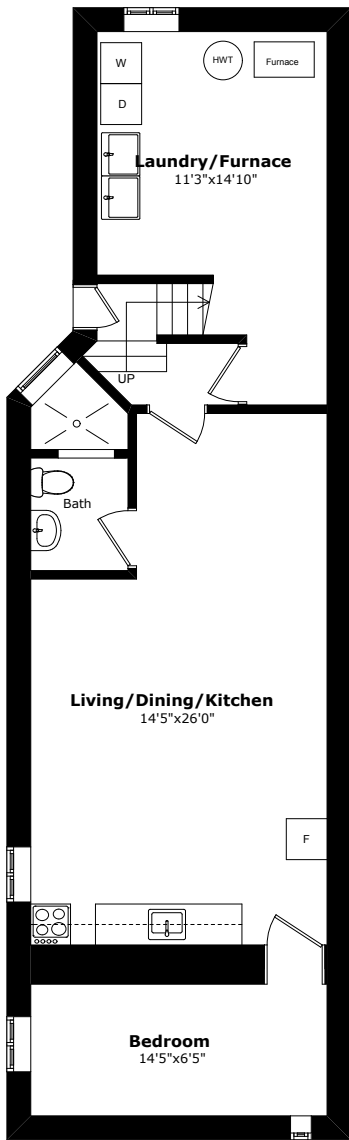


**Garage**  
17'3"x22'1"

**GARAGE**

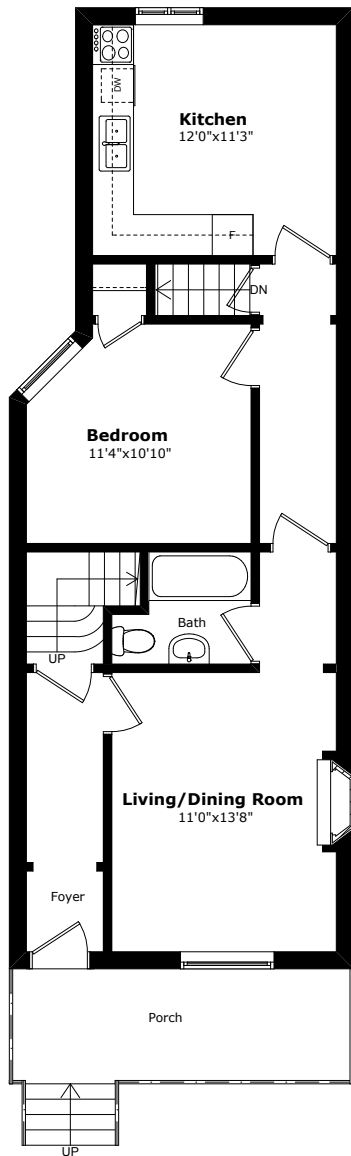


**Terrace**  
15'4"x9'5"

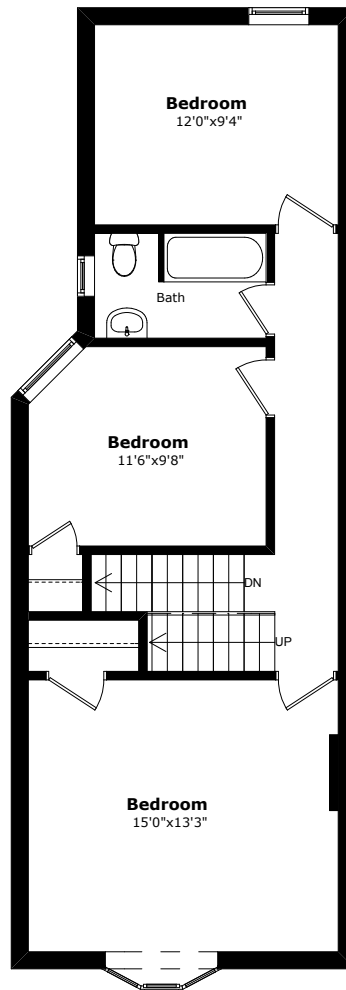


CLG: 6'7"

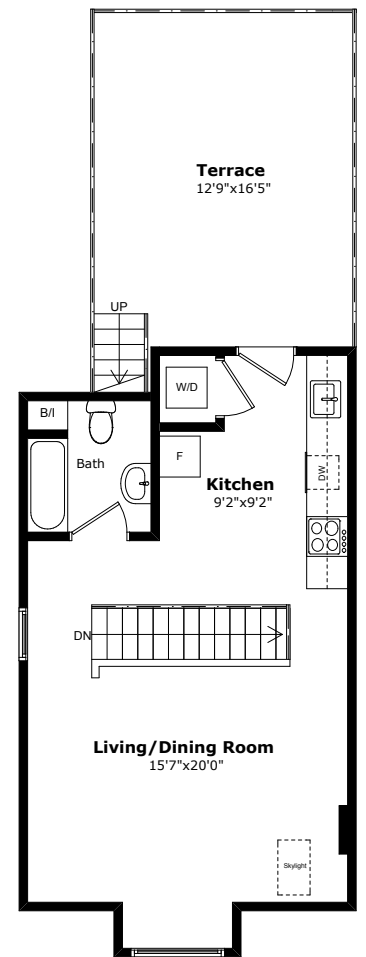
**LOWER FLOOR**



**MAIN FLOOR**



**SECOND FLOOR**



**THIRD FLOOR**

NOTE:  
THIS FLOOR PLAN IS PROVIDED FOR  
ILLUSTRATIVE PURPOSES ONLY  
BUYER TO VERIFY MEASUREMENTS  
WWW.HOUSSMAX.CA

# ROOM MEASUREMENT

197 Beatrice Street

Data Provided by [www.houssmax.ca](http://www.houssmax.ca) @2016

## Imperial

## Metric

### Main Floor

Living/Dining Room	11' 0"	x	13' 8"	3.35	x	4.17
Kitchen	12' 0"	x	11' 3"	3.66	x	3.43
Bedroom	11' 4"	x	10' 10"	3.45	x	3.30
Garage	17' 3"	x	22' 1"	5.26	x	6.73

### Second Floor

Bedroom	15' 0"	x	13' 3"	4.57	x	4.04
Bedroom	11' 6"	x	9' 8"	3.51	x	2.95
Bedroom	12' 0"	x	9' 4"	3.66	x	2.84

### Third Floor

Living/Dining Room	15' 7"	x	20' 0"	4.75	x	6.10
Kitchen	9' 2"	x	9' 2"	2.79	x	2.79
Terrace	12' 9"	x	16' 5"	3.89	x	5.00
Terrace	15' 4"	x	9' 5"	4.67	x	2.87

### Lower Floor

Living/Dining/Kitchen	14' 5"	x	26' 0"	4.39	x	7.92
Bedroom	14' 5"	x	6' 5"	4.39	x	1.96
Laundry/Furnace	11' 3"	x	14' 10"	3.43	x	4.52

### Area Calculation

Main Floor	733.9 sq.ft.	Garage	448.9 sq.ft.
Second Floor	733.9 sq.ft.		
Third Floor	453.4 sq.ft.		
Lower Floor	873.7 sq.ft.		
<b>Total</b>	<b>2794.9 sq.ft.</b>		