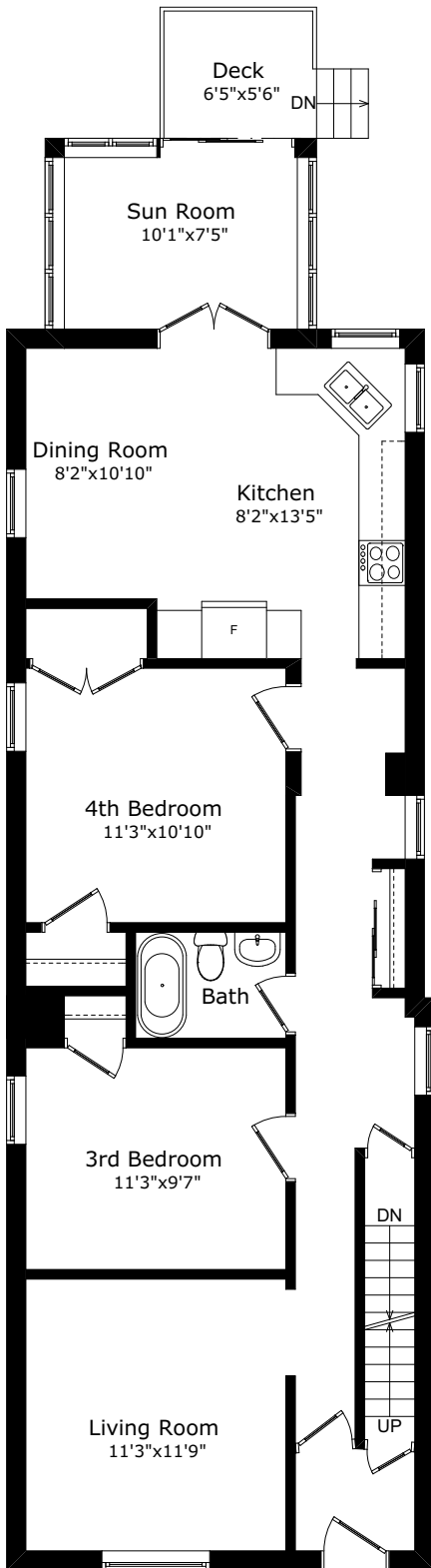
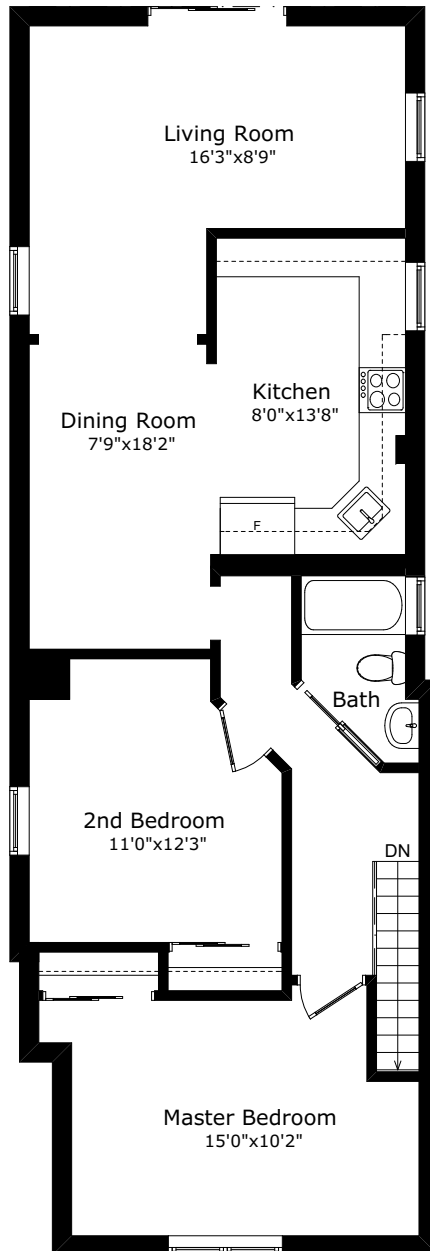


# 487 CLINTON STREET



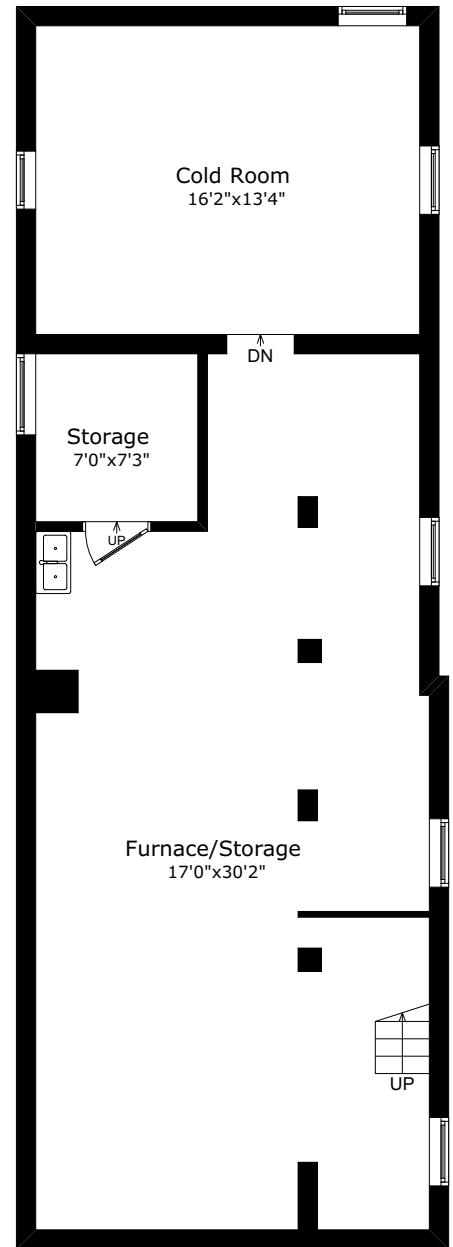
CLG: 8'5"

**MAIN FLOOR**



CLG: 8'3"

**SECOND FLOOR**



CLG: 6'8"

**LOWER FLOOR**

NOTE:  
THIS FLOOR PLAN IS PROVIDED FOR  
ILLUSTRATIVE PURPOSES ONLY  
BUYER TO VERIFY MEASUREMENTS  
WWW.HOUSSMAX.CA

# ROOM DATA SHEET

487 Clinton Street

Data Provided by [www.houssmax.ca](http://www.houssmax.ca) @2017

	Imperial			Metric		
	Width	x	Depth	Width	x	Depth
<b>Main Floor</b>						
Living Room	11' 3"	x	11' 9"	3.43	x	3.58
Dining Room	8' 2"	x	10' 10"	2.49	x	3.30
Kitchen	8' 2"	x	13' 5"	2.49	x	4.09
3rd Bedroom	11' 3"	x	9' 7"	3.43	x	2.92
4th Bedroom	11' 3"	x	10' 10"	3.43	x	3.30
Sun Room	10' 1"	x	7' 5"	3.07	x	2.26
Deck	6' 5"	x	5' 6"	1.96	x	1.68
<b>Second Floor</b>						
Master Bedroom	15' 0"	x	10' 2"	4.57	x	3.10
2nd Bedroom	11' 0"	x	12' 3"	3.35	x	3.73
Living Room	16' 3"	x	8' 9"	4.95	x	2.67
Dining Room	7' 9"	x	18' 2"	2.36	x	5.54
Kitchen	8' 0"	x	13' 8"	2.44	x	4.17
<b>Lower Floor</b>						
Furnace/Storage	17' 0"	x	30' 2"	5.18	x	9.19
Storage	7' 0"	x	7' 3"	2.13	x	2.21
Cold Room	16' 2"	x	13' 4"	4.93	x	4.06
<b>Area Calculation</b>						
Main Floor	1075.3	sq. ft.				
Second Floor	963.4	sq. ft.				
Lower Floor	989.7	sq. ft.				
Total	3028.5	sq. ft.				